

UNIPID

FINNISH UNIVERSITY PARTNERSHIP
FOR INTERNATIONAL DEVELOPMENT

Ethical guidelines for responsible academic partnerships with the Global South

Kaisa Kurki, UniPID-verkoston johtaja

kaisa.e.kurki@helsinki.fi

3.4.2025



Finnish University Partnership for International Development, UniPID

- Established in 2002 to advance universities' global responsibility by University rectors
- 10 member universities
- Coordinated by the University of Helsinki ->2025, University of Eastern Finland 2026->



STRATEGY 2020-2025

VISION

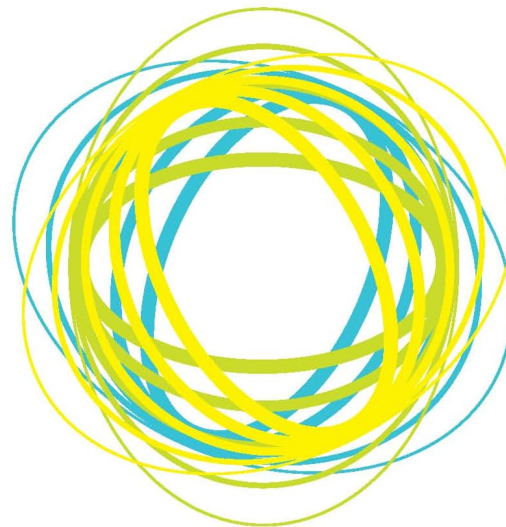
By 2025, through collaborative partnerships with actors in the Global South, Finnish universities have successfully integrated sustainable development pathways into the three pillars of higher education:

MISSION

The Finnish University Partnership for International Development (UniPID) supports higher education institutions in bringing global responsibility and Global South perspectives into their education, research, and societal impact activities, thus promoting international partnerships in support of sustainable development pathways.

VALUES

Diversity
Equality
Participation
Interdisciplinary learning
Research-based knowledge
Sustainability
Transparency



Education - Students can access high-quality courses on sustainable development pathways and will have the opportunity to work collaboratively with peers from the Global South.

Research – Collaborative projects involving partners and stakeholders in the Global South are increasingly common. This offers an opportunity to Finnish researchers to engage in co-creation of knowledge with peers from the Global South.

Societal impact – Universities – alongside other research organizations – contribute to evidence-informed decision-making by vigorously taking part in policy dialogues on sustainable development pathways and by actively bringing up Global South perspectives.

STRATEGIC PRIORITIES

Member university engagement
Virtual Studies development
Policy dialogue

Guidelines for Research in Partnership with Developing Countries

11 Principles

Swiss Commission for Research Partnership
with Developing Countries

KFPE

1998

Table of Contents

Foreword: Setting a new course – in research too?
Why change course?
What are we steering towards?

Acknowledgements

Introduction to the Guidelines
Basic principles
About the contents

The 11 Principles of Research Partnership

1. Decide on the objectives together
2. Build up mutual trust
3. Share information; develop networks
4. Share responsibility
5. Create transparency
6. Monitor and evaluate the collaboration
7. Disseminate the results
8. Apply the results
9. Share profits equitably
10. Increase research capacity
11. Build on the achievements

Appendix

1. Case studies
 - 1.1 The Prospects Project in Peru
 - 1.2 Meningitis in northern Ghana
 - 1.3 The Lake Victoria Project: implementation of a local Agenda 21
2. Snags and difficulties frequently encountered in research partnerships between developing and industrialised countries
3. The Charter of North-South Partners (J. Gaillard)

Epilogue

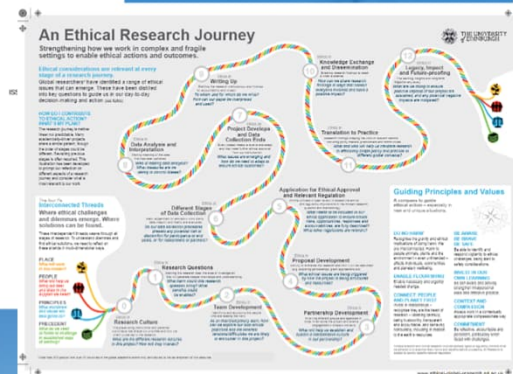
Abbreviations



Responsible internationalisation:
Guidelines for reflection on
international academic collaboration



**The European
Code of Conduct for
Research Integrity**
REVISED EDITION



STINT
Stiftelsen för internationalisering av
högre utbildning och forskning
The Swedish Foundation for International
Cooperation in Research and Higher Education

GLOBAL CODE OF CONDUCT FOR RESEARCH IN RESOURCE-POOR SETTINGS



www.globalcodeofconduct.org/



SAN CODE OF RESEARCH ETHICS

South African San Institute 2017



A Guide for Transboundary Research Partnerships

11 Principles

Swiss Commission for Research Partnerships
with Developing Countries (KFPE)



Swiss Academy of Sciences
Académie des sciences suisses
Accademia di scienze naturali
Academia de ciencias naturales

A CRITICAL RESOURCE

FOR
**ETHICAL
INTERNATIONAL
PARTNERSHIPS**

IGDC
interdisciplinary global
development centre

Interdisciplinary Global
Development Centre (IGDC)
University of York
Derwent College
Heslington, York, YO10 5DD
Email: igs@york.ac.uk

Guide to good practice for
inclusive research in global
development

Authors:
Henrice Altink, Sara de Jong, Joseph Gascoigne, Jean Grugel,
Papiya Mazumdar, Jessica Omukuti, Indrajit Roy and Piran White

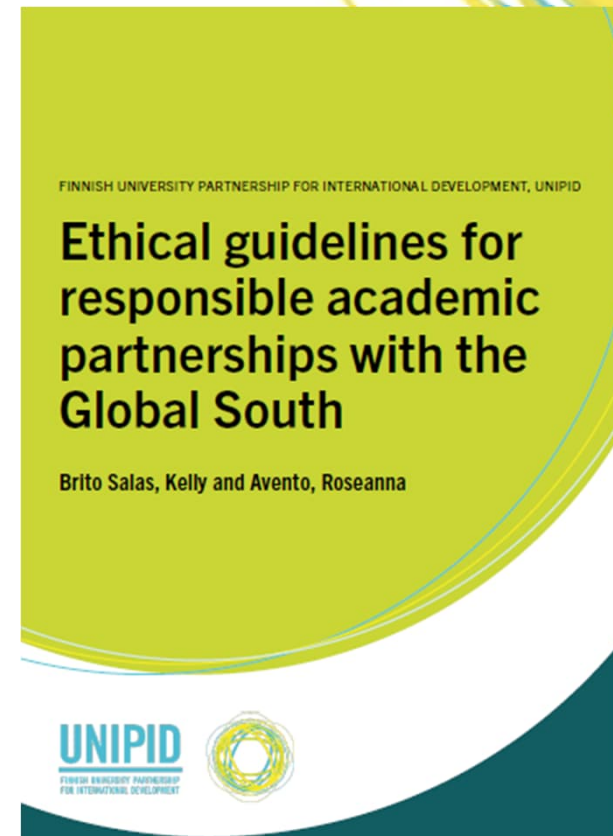
Correspondence:
Piran White: piran.white@york.ac.uk

Published:
April 2022



Konteksti ja tilaus ohjeille

- Korkeakoulutuksen ja tutkimuksen visio 2030 korostaa korkeakoulujen vahvistuvaa kansainvälisyyttä ja globaalia vastuuta
- Kansalliset verkostot ja rahoitusinstrumentit yhteistyöhön globaalin etelän maiden kanssa
- Globaaliin etelän tutkimuseettisille kysymyksille ja vastuulliseen globaalin etelän yhteistyöhön ei juuri huomiota aiemmin
- UniPID käynnisti työskentelyn 2021
 - TENK-yhteistyö
 - UniPIDin työryhmä ja kansainvälinen ohjausryhmä (rahoittajatahot, Afrikan, Lat. Amerikan ja Aasian edustajat)
- Prosessi
 - TENKin tutkimuseettisten ohjeiden ja muiden olemassa olevien ohjeiden kuiluanalyysi
 - Verkkokysely ja 4 työpajaa
 - Kommentit: TENK, UNIFI ja ARENE
- Ohjeiden julkistustilaisuus 25. lokakuuta 2023



<http://hdl.handle.net/10138/566406>

Eettiset ohjeet

- Keskeiset käsitteet:
 - Akateemiset kumppanuudet
 - Globaali etelä
 - Dekolonialistinen lähestymistapa
 - *Ethics dumping*
 - *Helicopter research* tai *parachute science*
 - Eturistiriidat
- Ohjeet: käsitteet, suositukset ja vinkit → arvot, ihanteet ja standardit, viitteet kirjallisuuteen ja tietoa muista ohjeista





Counterbalance inherent inequalities

Mitigate disparities by

- promoting diversity and inclusion when selecting and engaging with your partner
- encouraging language awareness and multilingualism
- promoting joint agenda-setting and open dialogue
- recognising your partner and promoting transparent and inclusive engagement practices



Context matters

Understand your partner's

- different professional, institutional, and system settings embedded in already differing social, cultural, economic, and political realities
- interests, perspectives, ideologies, societal goals

Recognise

- the diverse knowledge, traditions, and experiences



Manifest integrity in academic partnerships

Manifest integrity in your academic partnership by

- demonstrating respect, trust, transparency and honesty in your relations with your partner
- disclosing any dispute and set up, document and monitor conflict of interest and fair decision-making processes



Manage conflicts of interest

Manage conflict of interests by

- Disclosure
- Monitoring and enforcement
- Establishing impartial decision making
- Independent review and advise
- Recusal
- Documentation
- Transparency
- Policy development



Shift from 'do no harm' to 'ethics of care'

Shift from 'do no harm' to 'ethics of care' by making an effort to

- understand your partner's reality and experiential knowledge
- pay attention to the contextual social dynamics and cultural norms in the partnership
- attend to the needs and concerns of your partner



Shift from 'knowledge transfer' to 'knowledge(s) in dialogue'

Instead of imposing Western knowledge, give space to

- indigenous, local and traditional knowledge and practices
- open dialogue to foster co-design, co-creation and co-implementation



Counterbalance inherent inequalities

Disparities and uneven distribution of resources and opportunities among academic institutions, globally, can arise due to historical, economic, geopolitical, structural and systemic barriers. These disparities can affect academic partnerships negatively and limit sustainable outcomes. Acknowledging global inequalities and power imbalances can create an atmosphere of openness, transparency and mutual respect.

Reflect on and consider the following:

Promote inclusivity and diversity

- **Partnership building:** Consider partnerships with diverse institutions, organisations, communities and regions, or expand existing partnerships to include underrepresented stakeholders.
- **Transboundary research:** Promote interdisciplinary research and methodologies to contribute to a more balanced and inclusive global academic community.
- **Intersectionality:** Consider reviewing how age, gender, race, religion, ethnicity, disabilities, geographic location, educational background, socioeconomic status and sexuality have been considered in the partnership.

NOTE

By actively involving diverse stakeholders, their voices can be heard, concerns addressed and expertise utilised. Meaningful opportunities for participation and contribution build trust and foster stronger cooperation and long-term sustainability.

TIP

- Check out the [Human Rights-Based Approach and Gender Mainstreaming Checklist](#) and consider how your academic partnership is faring.

Encourage language awareness and multilingualism

Actively encourage language awareness and multilingualism in partnerships and provide opportunities for engaging in different formats.

Consider the following:

- Translation and interpretation services can help overcome language barriers and promote broader participation.
- Look into diverse ways for embedding language awareness in partner and stakeholder engagement processes, and communications in, e.g., meetings, workshops, public presentations, non-academic publications, conference presentations, and scientific publications. Dissemination of information in multi-language formats also makes information more accessible.
- Include the participation of individuals, communities, institutions and organisations whose primary language of communication is not English or other imperial languages.
- Promote and recognise research published in languages other than English or other imperial languages.

TIPS

- Check out the University of Helsinki [Guidelines for Language Awareness](#).
- Plan and budget (if needed) for language support in your projects and recruit proficient interpreters and translators. Acknowledge your interpreters and translators and pay them properly. They are your voice, after all.



Tietopaketti

- [The Ethical Guidelines](#)
- [Animoitu video](#)
- [Esite](#)
- Posterit
- Power Point –esitys
- [Globaalien akateemisten kumppanuuksien toolkit](#)
 - [Power dynamics and identity privilege](#)
 - [Equity in international research partnerships](#)
 - [Research partnerships in focus](#)
 - [Partnership administration and management](#)
 - [Conducting fieldwork in another culture](#)



Tallenteita

- UniPIDin väitöskirjatutkijoiden verkoston työpajat
 - [Decolonizing research practices](#)
 - [Researching with the Global South: Methods, Fieldwork, and Ethics](#)
- UniPIDin vuosiseminaari
 - [From globally relevant research to science diplomacy – In search of a Finnish approach to strengthening global academic partnership for a sustainable future](#)

DEVELOPMENT DAYS DOCSHOP 2025



Researching with the Global South: Methods, Fieldwork, and Ethics

February 26, 2025

Sabelo J. Ndlovu-Gatsheni
Professor
University of Bayreuth



Professor Sabelo is currently Professor and Chair of Epistemologies of the Global South with Emphasis on Africa and Vice-Dean of Research in the Africa Multiple Cluster of Excellence at the University of Bayreuth in Germany; Professor Extraordinarius at the Centre for Gender and African Studies at the University of Free State (UFS) in South Africa; Honorary Professor in the School of Education (Education & Development Studies) at the University of KwaZulu-Natal (UKZN) in South Africa; Research Associate at the Ali Mazrui Centre for Higher Education at the University of Johannesburg (UJ) in South Africa; and Research Associate at The Ferguson Center for African and African American Studies at The University of Georgia.

JOMEN KEHITYSTUTKIMUKSEN SEURA
SÄLLSKAPEN FÖR UTVECKLINGSFORSKNING
FINNISH SOCIETY FOR DEVELOPMENT RESEARCH

UniPID's Annual Seminar 2024

Strengthening agency in the pluriverses of the academic worlds

5 November 2024 at 15:30 – 17:30 (EET Time)
University of Oulu (and online)





PL 27 (Latokartanonkaari 7)
00014 Helsingin yliopisto



www.unipid.fi



unipid-info@helsinki.fi



<https://www.linkedin.com/company/finnish-university-partnership-for-international-development-unipid/>



www.unipid.fi/unipid/newsletters/

Thank you!